

LED T5 SIGNLIGHT SERIES

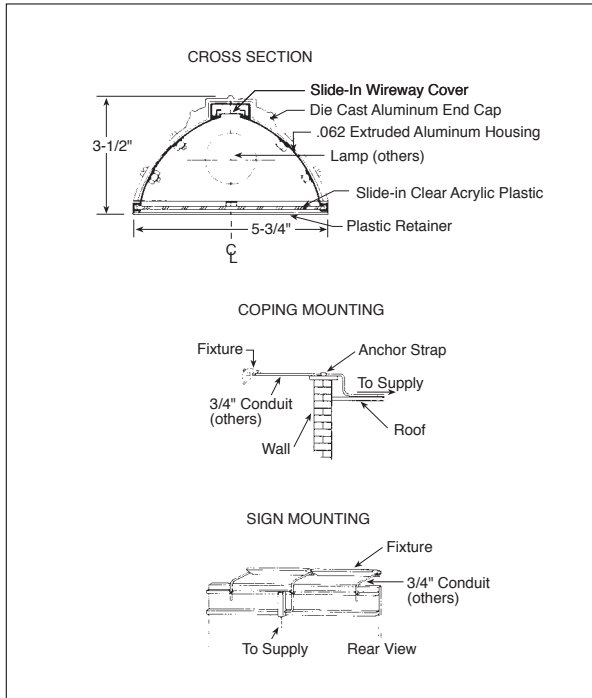


Indoor and outdoor T5 LED SignLight with internal ballast compartment and LED T5 HO lamp. No remote ballast is needed.



INDOOR/OUTDOOR

Dimensional Data



Specifications

Mounting: Fixtures may be mounted singularly, in tandem or in continuous rows supported by 3/4" conduit to marry with 2 way splice box (tapered for 3/4"), for use between fixtures and tandem or in continuous row applications.

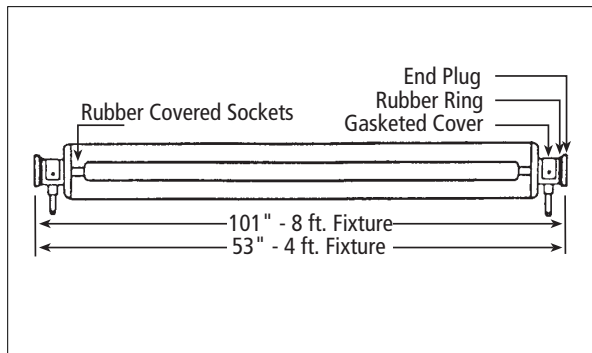
Construction: Extruded aluminum body, cast aluminum end plates and white powdercoat finish on inside and outside.

Diffuser: Clear extruded acrylic lens to insure the weatherproof integrity of the fixture.

Wiring: Standard ballasts are universal voltage -20°F

Approval: All units are Underwriter's Laboratories (UL) listed.

Dimensional Data



Ordering Information

Catalog #	Length
LED14T5HO	4'
LED24T5HO	4'
LED28T5HO	8'
LED48T5HO	8'

Photometrics

Photometric Information available upon request

